

SAM 3x3

1612070

Official 3x3 World Tour basketball backstop

SAM 3x3 is the world standard for 3x3 basketball. This SAM with an 'urban' look was designed for FIBA World and is the official FIBA 3x3 World Tour backstop. With both the SAM system (Spring Assisted Mechanism) and the APF system (Automatic Pedestal Feet). One step easy set-up system, so within 5 seconds 1 person can set the basketball backstop into the right game position. The SAM 3x3 is highly suitable for temporary events, both indoor and outdoor.



Technical Specifications

- Projection: 225 cm.
- Positioning: Lifting and lowering by use of SAM system (Spring Assisted Mechanism): easy, safe and low-maintenance.
- Stability: APF system (Automatic Pedestal Feet): when raising the unit, the feet automatically reach lower onto the ground, immediately stabilising the backstop and setting it in the right game position.
- Backstop: Strong and stable, matte black coated high-tensile strength steel frame. Lifetime maintenance free pivot bearings, 100% enclosed counter weights.
- Wheels: 2 double swivel wheels in the front and 2 triple fixed wheels at in the rear for optimal weight distribution, all with bearings for great mobility.
- Backboard: Patented dunk-proof 12 mm glass with a full-perimeter steel frame and cut-out for the ring. Steel frame coated matte black.
- Ring: Pro-Action 180° multi-directional, top competition breakaway dunk ring, with extra safe net fixing system.
- Net: Sturdy nylon Anti-Whip basketball net, 6 mm.
- Padding: Impact area padding on both the front and sides of the base frame. Standard colour matte black. Backboard protection padding is made of high density PU foam. Urban look and feel.
- Optional: paddings can be personalized. Contact us for further information.
- Dimensions: Storage position (lwxh) ca 415x1,90x2,06 cm Automatic beam lock in storage position.
- Playing position (lwxh) ca 478x190x395 cm. Automatic snap lock on telescope in playing position
- Transport: Equipped with openings for a forklift truck for transport over longer distances. Very convenient for loading and offloading backstop from truck at events.
- Anchoring: Additional ballast weight in base, avoiding the need for floor anchors
- Standard: in accordance with EN-1270.
- FIBA level: FIBA endorsed for all FIBA 3x3 World Tour events and all FIBA 3x3 World Championships; FIBA approved Level 3



Storage position

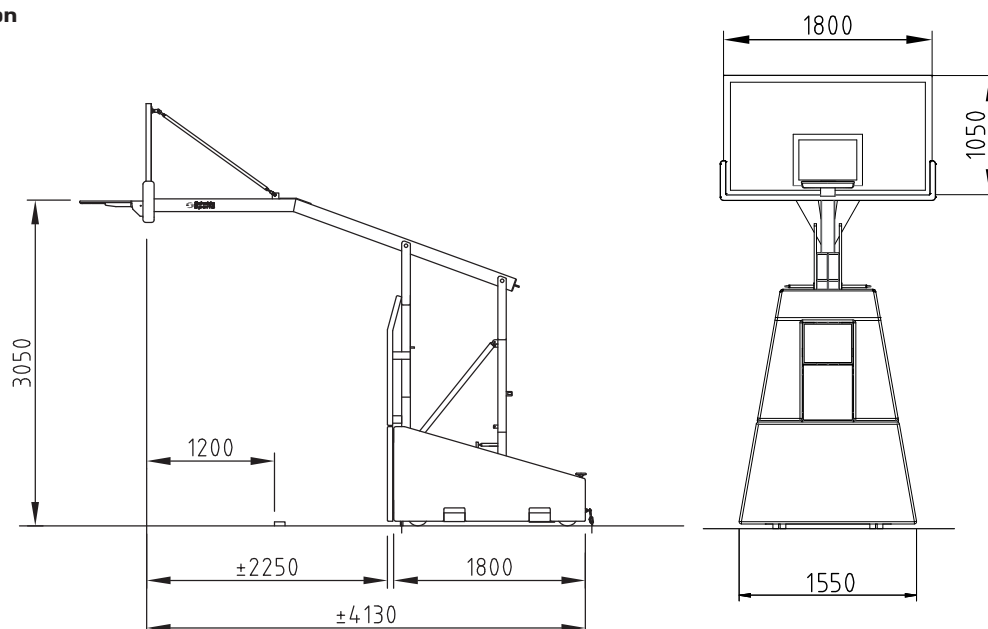


Ring height 260 cm

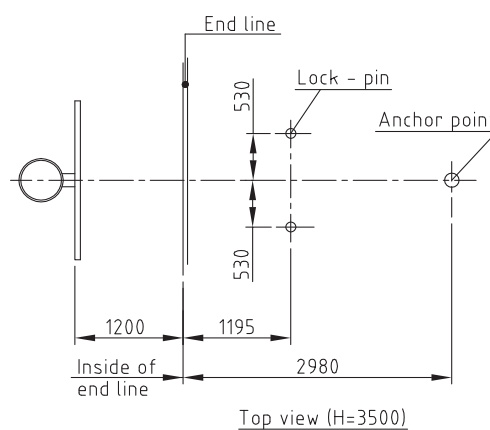
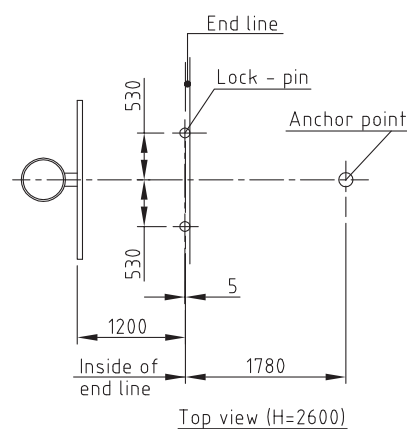


Ring height 305 cm

Measurements in game position



Measurements for anchoring system



Projection (backboard to front of impact area) 225 cm

Distance from inside end line to nearest wall needed for setup with AUTOMATIC APF is 420 cm. If distance is less, MANUAL APF option is required. Minimum distance required for use with MANUAL DSF is 305 cm from inside end line to nearest wall.